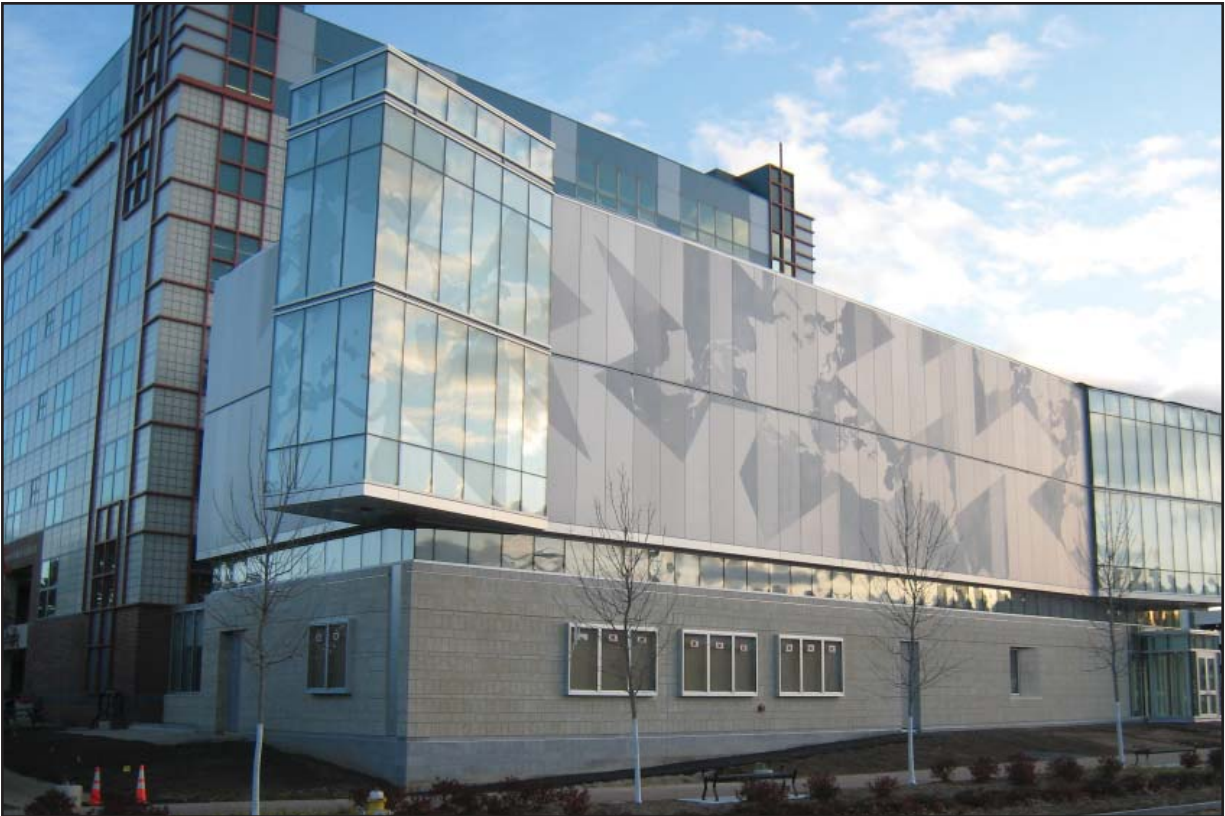


# OSHER MAP LIBRARY

AND SMITH CENTER FOR CARTOGRAPHIC EDUCATION  
AT THE UNIVERSITY OF SOUTHERN MAINE

Grand opening scheduled for October 18, 2009



207-780-4850 [www.usm.maine.edu/maps](http://www.usm.maine.edu/maps)

## Construction update 2008-2009

The expansion of the Osher Map Library was part of an ambitious “University Commons” program for USM’s Portland Campus which dramatically changed the streetscape on Bedford Street, the approach road to campus. The first phase, begun in Spring 2007, included the construction of the Wishcamper Center. It houses the national headquarters of the Osher Lifelong Learning Institute and the Muskie School of Public Policy. The master plan for “University Commons” was designed by Koetter Kim & Associates, a Boston based architectural and urban planning firm. The construction manager for the project was Wright-Ryan Construction, Inc. of Portland, Maine.

### Wishcamper Center



The second phase of the building project incorporated the expansion of the Osher Map Library and the addition of a new arcade entrance for the Glickman Family Library. Construction of the three story addition was begun Fall 2007 and completed Spring 2009, thereby quadrupling the size of the map library from 4,525 to 19,000 square feet. The University Commons project was made possible by a private fund-raising campaign, including the Kresge Challenge Grant, and a higher education bond.

### Bedford Street Entrance



# OML 1<sup>ST</sup> FLOOR INTERIOR

The new map library addition includes the Cohen Education Center, a multi-purpose instructional space dedicated to public outreach. The collections will be showcased in a new exhibition room and two permanent globe display cases. The seating capacity of the Reference Room is doubled thanks to a gift of four tables and chairs donated by Thos. Moser Cabinet Makers. Still in progress at this time is a new digital reference room and a new digital reproduction center which will be located in the old exhibition room once the retrofit is completed this summer.

**2008**



Cohen Education Center 2008

**2009**



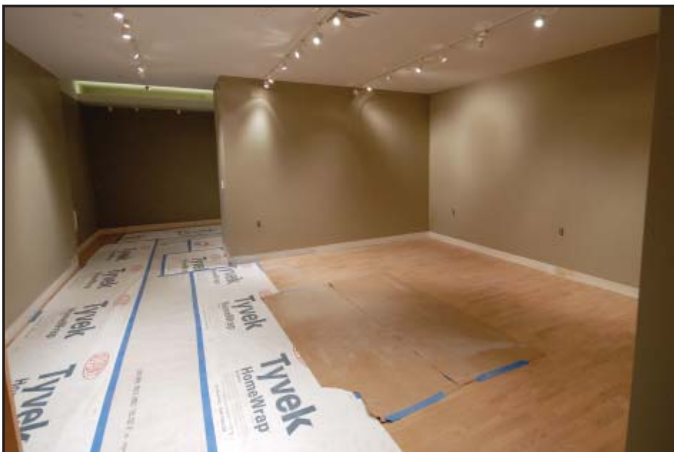
Cohen Education Center 2009



Reference Room 2008



Reference Room 2009



Exhibition room 2008



Exhibition room 2009



# OML 2ND AND 3RD FLOOR STORAGE ROOMS

A new two-story vault, measuring 7,750 square feet, will house the growing cartographic collections. The custom designed storage systems for atlases, globes, maps, and scientific instruments were purchased from Systematics, Inc. with a \$466,000 Grant for Stabilizing Humanities Collections from the National Endowment for the Humanities, Division of Preservation and Access. In January 2009, some 80,000 pounds of compact steel shelving and flat files were installed on rails as shown below.



Storage room - 2008



Compact shelving units installed - 2009



Globe cases - 2009



Atlas shelving - 2009



Compact flat files with atlas shelving - 2009



Art racks to store framed maps - 2009



# NEW LIBRARY ENTRANCE & OML FACADE

Situated on the corner of Bedford Street and Forest Avenue in Portland, the Osher Map Library is the new gateway to the USM campus. The facade of the top two floors is clad with aluminum panels measuring 3' wide by 13'2" high. These have been etched with a projection of the world map known as the Dymaxion Map, courtesy of the Buckminster Fuller Institute. This projection was created in 1946 by Fuller, the noted futurist and inventor, to represent the entire globe with minimal distortions whether folded or flattened (as depicted on the panels). A total of 104 panels were etched by Intaglio Composites and anodized by MPP Group, both Texas based companies. Ipswich Bay Glass (IBG) of Massachusetts coordinated the entire process and installed the finished panels. This may possibly be the largest such exterior map in the world.

**2008**



May 2008



June 2008 - Bedford St.



August 2008

**2009**



May 2009



May 2009 - Bedford St.



May 2009